

GIFU Home

Guide des sites de tournage de la vidéo promotionnelle du département de Gifu

Le Japon hors du temps, naturellement une aventure 3 – Des traditions intemporelles

Shirakawa-go



Article spécialement consacré à Shirakawa-go

<https://visitgifu.com/fr/see-do/unesco-world-heritage-site-shirakawa-go-2/>

A propos de la région

<https://visitgifu.com/fr/specials-of-gifu/shirakawa-go/>

Tours à la journée et activités

<https://www.govoyagin.com/activities/japan-gifu-visit-shirakawago-and-explore-traditional-japan/2586?acode=gifupref>

<https://www.viator.com/Takayama/d25943-ttd/p-183058P14?eap=brand-subbrand-82427&aid=vba82427en>

<https://www.viator.com/tours/Gifu-Prefecture/Shirakawa-go-Half-day-tour-UNESCO-World-Heritage-near-Takayama/d50165-183058P7>

<https://www.klook.com/en-US/activity/17723-shirakawago-half-day-tour-nagoya/>

Les maisons de sake locales



Tours à la journée et activités

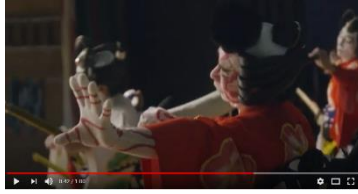
<https://www.viator.com/Takayama/d25943-ttd/p-45022P1?eap=brand-subbrand-82427&aid=vba82427en>

<https://www.viator.com/Takayama/d25943-ttd/p-183058P16?eap=brand-subbrand-82427&aid=vba82427en>

<https://www.viator.com/Takayama/d25943-ttd/p-73612P2?eap=brand-subbrand-82427&aid=vba82427en>

<https://www.viator.com/Gifu-Prefecture/d50165-ttd/p-86493P1?eap=brand-subbrand-82427&aid=vba82427en>

Ji-Kabuki (le Kabuki de Gifu)



A propos de la tradition

<https://visitgifu.com/see-do/ji-kabuki/>

Tours à la journée et activités

<https://www.govoyagin.com/activities/japan-gifu-ji-kabuki-local-kabuki-experience-nakatsugawa/12213?acode=gifupref>

<https://www.govoyagin.com/ja/activities/japan-gifu-kabuki-makeover-backstage-tour-optional-overnight/12207>

<https://www.viator.com/tours/Gifu-Prefecture/Visit-the-Local-Kabuki-Theater-Meijiza-and-Experience-Kumadori-Makeup/d50165-51978P521>

La pêche au cormoran



Les endroits pour assister à la pêche au cormoran

La pêche au cormoran de Gifu sur la rivière Nagara (ville de Gifu)

<https://visitgifu.com/fr/see-do/cormorant-fishing-on-the-nagara-river-2/>

La pêche au cormorant Oze (ville de Seki)

<https://visitgifu.com/see-do/oze-cormorant-fishing/>

Tours à la journée

<https://www.viator.com/tours/Gifu-Prefecture/Oze-Ukai-Japans-Oldest-Cormorant-Fishing-and-Purveyor-to-the-Imperial-Household/d50165-51978P528>

Les lames de Seki



Article consacré aux lames de Seki

<https://visitgifu.com/fr/specials-of-gifu/seki-blades/>

Les établissements liés

La coutellerie Sanshu et le musée Seki Hamono

<https://visitgifu.com/fr/see-do/cutler-sansyu-seki-hamono-museum/>

Le musée de la forgerie traditionnelle de Seki

<https://visitgifu.com/fr/see-do/seki-traditional-swordsmith-museum-2/>

Tours à la journée et activités

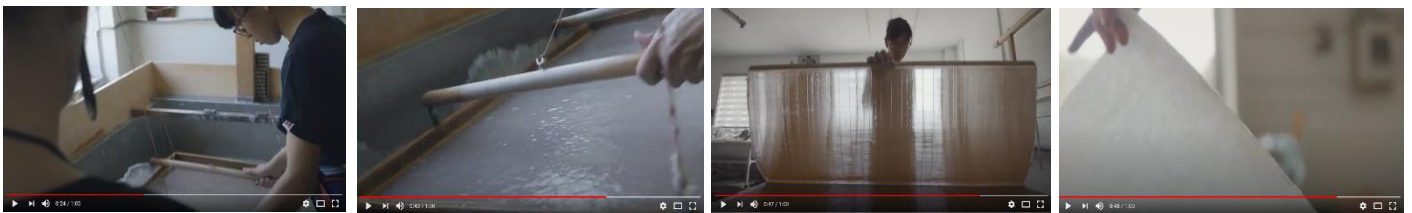
<https://www.govoyagin.com/activities/japan-gifu-make-your-own-samurai-knife-with-a-certified-swordsmith/3146?acode=gifupref>

<https://www.govoyagin.com/ja/activities/japan-gifu-make-your-own-hunting-or-kitchen-knife-at-a-top-knife-maker/10765?acode=gifupref>

<https://www.govoyagin.com/activities/japan-gifu-complete-samurai-sword-experience-in-seki-city/10832?acode=gifupref>

<https://www.govoyagin.com/ja/activities/japan-gifu-make-your-own-hunting-or-kitchen-knife-at-a-top-knife-maker/10765?acode=gifupref>

Le papier Mino Washi



A propos de la tradition

<https://visitgifu.com/fr/see-do/le-mino-washi/>

A propos de la région

<https://visitgifu.com/see-do/udatsu-wall-historical-district/>

Tours à la journée et activités

<https://www.govoyagin.com/ja/activities/japan-gifu-discover-traditional-japanese-craft-washi-making-gifu/10836?acode=gifupref>

<https://www.govoyagin.com/ja/activities/japan-gifu-washi-letterpress-printing-udatsu-historical-district-gifu/10835?acode=gifupref>

<https://www.govoyagin.com/ja/activities/japan-gifu-washi-paper-making-with-an-artisan-in-mino-gifu-prefecture/10751?acode=gifupref>

Mitake Hana-zushi (sushi en forme de fleurs)



A propos de l'activité

<https://visitgifu.com/fr/see-do/mitake-hana-zushi-2/>

A propos de la région

<https://visitgifu.com/fr/see-do/mitake-juku/>

Tours à la journée et activités

<https://www.viator.com/tours/Gifu-Prefecture/Experience-Hana-Zushi-Making-with-Local-Grandmas-in-Gifu/d50165-51978P522>

L'ancienne route Nakasendo



Article consacré à l'ancienne route Nakasendo

<https://visitgifu.com/fr/specials-of-gifu/nakasendo/>

A propos du Nakasendo

<https://visitgifu.com/fr/see-do/lancienne-route-nakasendo/>

Les lieux d'intérêt dans les environs

<https://visitgifu.com/fr/see-do/magome-juku-historic-post-town-2/>

<https://visitgifu.com/fr/see-do/naegi-castle-ruins/>

Tours à la journée et activités

<https://www.govoyagin.com/ja/activities/japan-gifu-walk-and-cycle-on-the-old-nakasendo-road-magome-ena-gorge/4275?acode=gifupref>

<https://www.govoyagin.com/ja/activities/japan-gifu-nakasendo-walking-and-cycling-tour-of-magome-juku-and-kashimo/9504?acode=gifupref>

<https://www.klook.com/en-US/activity/15597-explore-magome-lunch-day-trip-nagoya/>

Takayama



A propos de Takayama et des lieux d'intérêt

<https://visitgifu.com/fr/see-do/takayama-historic-district-2/>

<https://visitgifu.com/fr/see-do/takayama-jinya-2/>

<https://visitgifu.com/fr/see-do/hida-takayama-miyagawa-morning-market/>

Tours à la journée et activités

<https://www.viator.com/Takayama/d25943-ttd/p-183058P10?eap=brand-subbrand-82427&aid=vba82427en>

<https://www.viator.com/Takayama/d25943-ttd/p-235914P7?eap=brand-subbrand-82427&aid=vba82427en>

<https://www.viator.com/Takayama/d25943-ttd/p-235914P6?eap=brand-subbrand-82427&aid=vba82427en>

<https://www.viator.com/Takayama/d25943-ttd/p-85886P321?eap=brand-subbrand-82427&aid=vba82427en>

La danse de Gujo



A propos de la danse de Gujo

<https://visitgifu.com/fr/see-do/danse-de-gujo-2/>

Les lieux d'intérêt dans les environs

<https://visitgifu.com/see-do/gujo-hachiman-castle/>

Les ateliers dans les environs (Teinture indigo de Gujo)

<https://www.govoyagin.com/ja/activities/japan-gifu-aizome-traditional-indigo-dyeing-in-gujo-hachiman/10766>

Le château de Gifu



A propos du château de Gifu

<https://visitgifu.com/fr/see-do/gifu-castle-2/>

Autres traditions artisanales intemporelles

Activités et ateliers

Artisanat du bois

<https://www.govoyagin.com/ja/activities/japan-gifu-sake-tasting-and-masu-cup-making-in-ogaki-gifu-prefecture/10793?acode=gifupref>

<https://www.govoyagin.com/ja/activities/japan-gifu-tour-craft-studios-make-wooden-vase/12185?acode=gifupref>

La poterie de Mino (Céramiques)

<https://www.govoyagin.com/ja/activities/japan-gifu-mino-ware-pottery-making-in-tajimi-city-gifu-prefecture/10791?acode=gifupref>

<https://www.govoyagin.com/ja/activities/japan-gifu-pottery-painting-at-kobei-gama-in-tajimi-gifu-prefecture/10792?acode=gifupref>

<https://www.govoyagin.com/ja/activities/japan-gifu-mino-ware-pottery-painting-and-tea-in-tajimi-gifu-prefecture/10788?acode=gifupref>

<https://www.govoyagin.com/ja/activities/japan-gifu-japanese-tea-and-hikidashi-guro-ware-in-toki-gifu-prefecture/10789?acode=gifupref>

<https://www.govoyagin.com/ja/activities/japan-gifu-japanese-ceramics-factory-tour-and-sake-tasting-from-mino-ware/10764?acode=gifupref>