

GIFU Home

Videos promocionales de la Prefectura de Gifu - Guía por los lugares filmados.

La eterna Tradición de Japón, naturalmente una aventura 2 - La vasta naturaleza

Ciclismo en Hida-Satoyama



Información relacionada

<https://visitgifu.com/es/see-do/hida-furukawa-town-of-white-walled-storehouses-along-the-seto-river/>

Excursiones y actividades en los alrededores.

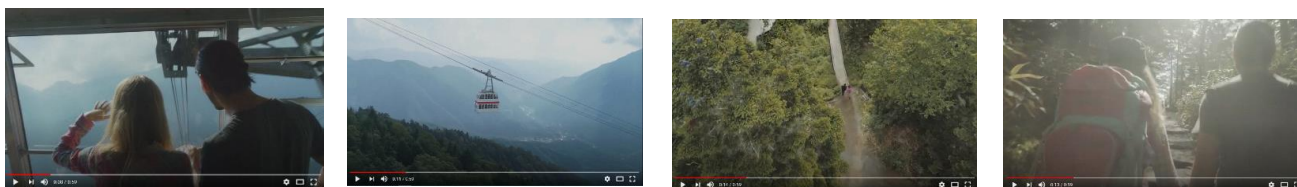
<https://visitgifu.com/it/see-do/hida-satoyama-cycling/>

<https://www.viator.com/Gifu-Prefecture/d50165-ttd/p-15946P14?eap=brand-subbrand-82427&aid=vba82427en>

<https://www.viator.com/Gifu-Prefecture/d50165-ttd/p-15946P15?eap=brand-subbrand-82427&aid=vba82427en>

<https://visitgifu.com/es/see-do/rail-mountain-bike-gattan-go/>

Alpes japoneses del norte: el teleférico Shin-Hotaka



Información relacionada

<https://visitgifu.com/it/see-do/shinhotaka-ropeway/>

<https://visitgifu.com/it/see-do/okuhida-hot-spring-villages/>

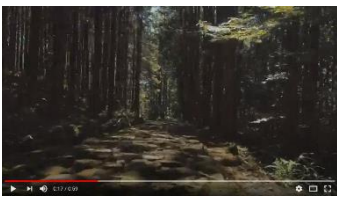
Excursiones y actividades en los alrededores.

<https://www.govoyagin.com/ja/activities/japan-gifu-explore-the-natural-beauty-of-shin-hotaka-and-hot-springs/3335?acode=gifupref>

<https://www.klook.com/en-US/activity/17650-shinhotaka-ropeway-ticket-nagoya/>

<https://www.klook.com/en-US/activity/21617-okuhida-kamikochi-bus-tickets-shinhotaka-ropeway-nagoya/>

La antigua carretera de Nakasendo



Artículo en profundidad

<https://visitgifu.com/es/specials-of-gifu/nakasendo/>

Información relacionada y lugares para visitar

<https://visitgifu.com/es/see-do/ancient-nakasendo-highway/>

<https://visitgifu.com/es/see-do/magome-juku-historic-post-town/>

<https://visitgifu.com/es/see-do/ochiai-juku/>

Excursiones y actividades en los alrededores.

<https://www.govoyagin.com/ja/activities/japan-gifu-walk-and-cycle-on-the-old-nakasendo-road-magome-ena-gorge/4275?acode=gifupref>

<https://www.govoyagin.com/ja/activities/japan-gifu-nakasendo-walking-and-cycling-tour-of-magome-juku-and-kashimo/9504?acode=gifupref>

<https://www.klook.com/en-US/activity/15597-explore-magome-lunch-day-trip-nagoya/>

Las cascadas de Hida-Osaka



Descubriendo la zona

<https://visitgifu.com/es/see-do/cascadas-de-hida-osaka/>

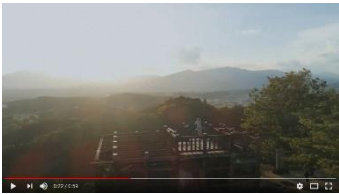
<https://visitgifu.com/it/see-do/gero-hot-spring/>

Excursiones de un día

<https://www.govoyagin.com/activities/japan-gifu-half-day-hida-osaka-waterfall-guided-hiking-hour-in-gero/9394?acode=gifupref>

<https://www.viator.com/Osaka/d333-ttd/p-72670P4?eap=brand-subbrand-82427&aid=vba82427en>

Las ruinas del castillo de Naegi



Información relacionada

<https://visitgifu.com/es/see-do/naegi-castle-ruins/>

<https://visitgifu.com/es/see-do/nakatsugawa-juku/>

Zonas de Aguas termales



Gifu Hot-Spring Area Introductions

Gero

<https://visitgifu.com/es/see-do/gero-hot-spring/>

Okuhida (Alpes japoneses del norte)

<https://visitgifu.com/es/see-do/okuhida-hot-spring-villages/>

Nagaragawa (ciudad de Gifu)

Visit Gifu Promo Video Locations Guide 2May 15, 2020

<https://visitgifu.com/es/see-do/nagaragawa-hot-springs/>

Excursiones y actividades en los alrededores.

<https://www.govoyagin.com/activities/japan-gifu-stroll-on-gero-onsen-streets-and-stay-overnight-from-tokyo/4116?acode=gifupref>

<https://www.viator.com/Takayama/d25943-ttd/p-183058P12?eap=brand-subbrand-82427&aid=vba82427en>

<https://www.klook.com/en-US/activity/16808-takayama-gero-onsen-hida-beef-lunch-nagoya/>

Alpes japoneses del norte - Monte Norikura



Información relacionada

<https://visitgifu.com/es/see-do/northern-japan-alps/>

<https://visitgifu.com/es/see-do/goshikigahara-forest/>

Excursiones y actividades en los alrededores.

<https://www.govoyagin.com/activities/japan-nagano-mt-norikura-sunrise-viewing-bus/11969?acode=gifupref>

<https://www.govoyagin.com/activities/japan-gifu-explore-the-natural-beauty-of-shin-hotaka-and-hot-springs/3335?acode=gifupref>

<https://www.viator.com/Tokyo/d334-ttd/p-14299P34?eap=brand-subbrand-82427&aid=vba82427en>