

GIFU Home

I cortometraggi su Gifu - Guida ai luoghi filmati

Il Giappone senza tempo: naturalmente un'avventura /2

In bicicletta a Hida-Satoyama



Informazioni

<https://visitgifu.com/it/see-do/hida-furukawa-town-of-white-walled-storehouses-along-the-seto-river/>

Gite in giornata e attività nei dintorni

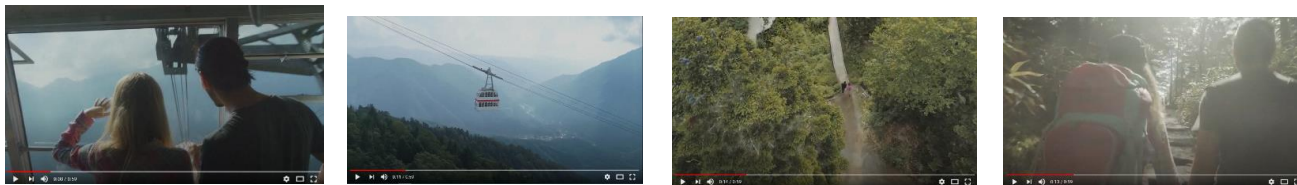
<https://visitgifu.com/it/see-do/hida-satoyama-cycling/>

<https://www.viator.com/Gifu-Prefecture/d50165-ttd/p-15946P14?eap=brand-subbrand-82427&aid=vba82427en>

<https://www.viator.com/Gifu-Prefecture/d50165-ttd/p-15946P15?eap=brand-subbrand-82427&aid=vba82427en>

<https://visitgifu.com/it/see-do/rail-mountain-bike-gattan-go/>

Alpi settentrionali giapponesi - la funivia di Shin-Hotaka



Informazioni

<https://visitgifu.com/it/see-do/shinhotaka-ropeway/>

<https://visitgifu.com/it/see-do/okuhida-hot-spring-villages/>

Gite in giornata e attività nei dintorni

<https://www.govoyagin.com/ja/activities/japan-gifu-explore-the-natural-beauty-of-shin-hotaka-and-hot-springs/3335?acode=gifupref>

<https://www.klook.com/en-US/activity/17650-shinhotaka-ropeway-ticket-nagoya/>

<https://www.klook.com/en-US/activity/21617-okuhida-kamikochi-bus-tickets-shinhotaka-ropeway-nagoya/>

L'antica strada Nakasendo



Articolo di approfondimento

<https://visitgifu.com/it/specials-of-gifu/nakasendo/>

Informazioni e luoghi da visitare

<https://visitgifu.com/it/see-do/ancient-nakasendo-highway/>

<https://visitgifu.com/it/see-do/magome-juku-historic-post-town/>

<https://visitgifu.com/it/see-do/ochiai-juku/>

Gite in giornata e attività nei dintorni

<https://www.govoyagin.com/ja/activities/japan-gifu-walk-and-cycle-on-the-old-nakasendo-road-magome-ena-gorge/4275?acode=gifupref>

<https://www.govoyagin.com/ja/activities/japan-gifu-nakasendo-walking-and-cycling-tour-of-magome-juku-and-kashimo/9504?acode=gifupref>

<https://www.klook.com/en-US/activity/15597-explore-magome-lunch-day-trip-nagoya/>

Le cascate di Hida-Osaka



Alla scoperta dell'area

<https://visitgifu.com/it/see-do/hida-osaka-falls/>

<https://visitgifu.com/it/see-do/gero-hot-spring/>

Gite in giornata

<https://www.govoyagin.com/activities/japan-gifu-half-day-hida-osaka-waterfall-guided-hiking-hour-in-gero/9394?acode=gifupref>

<https://www.viator.com/Osaka/d333-ttd/p-72670P4?eap=brand-subbrand-82427&aid=vba82427en>

Le rovine del castello di Naegi



Informazioni

<https://visitgifu.com/it/see-do/naegi-castle-ruins/>

<https://visitgifu.com/it/see-do/nakatsugawa-juku/>

Aree termali



Guide alle aree termali di Gifu:

Gero

Visit GifuPromo Video Locations Guide 2May 15, 2020

<https://visitgifu.com/it/see-do/gero-hot-spring/>

Okuhida (Alpi settentrionali giapponesi)

<https://visitgifu.com/it/see-do/okuhida-hot-spring-villages/>

Nagaragawa (Gifu City)

<https://visitgifu.com/it/see-do/nagaragawa-hot-springs/>

Gite in giornata e attività nei dintorni

<https://www.govoyagin.com/activities/japan-gifu-stroll-on-gero-onsen-streets-and-stay-overnight-from-tokyo/4116?acode=gifupref>

<https://www.viator.com/Takayama/d25943-ttd/p-183058P12?eap=brand-subbrand-82427&aid=vba82427en>

<https://www.klook.com/en-US/activity/16808-takayama-gero-onsen-hida-beef-lunch-nagoya/>

Alpi settentrionali giapponesi - Il monte Norikura



Informazioni

<https://visitgifu.com/it/see-do/northern-japan-alps/>

<https://visitgifu.com/it/see-do/goshikigahara-forest/>

Gite in giornata e attività nei dintorni

<https://www.govoyagin.com/activities/japan-nagano-mt-norikura-sunrise-viewing-bus/11969?acode=gifupref>

<https://www.govoyagin.com/activities/japan-gifu-explore-the-natural-beauty-of-shin-hotaka-and-hot-springs/3335?acode=gifupref>

<https://www.viator.com/Tokyo/d334-ttd/p-14299P34?eap=brand-subbrand-82427&aid=vba82427en>