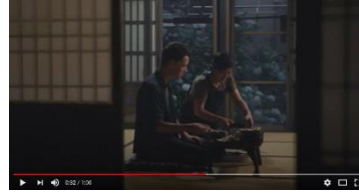


GIFU Home

Videos promocionales de la Prefectura de Gifu - Guía por los lugares filmados.

*El Eterna Tradición de Japón: naturalmente una aventura / 3
Tradiciones Eternas*

Shirakawa-go



Artículo en profundidad

<https://visitgifu.com/es/see-do/unesco-world-heritage-site-shirakawa-go/>

Descubriendo la zona

<https://visitgifu.com/es/specials-of-gifu/shirakawa-go/>

Excursiones y actividades en los alrededores.

<https://www.govoyagin.com/activities/japan-gifu-visit-shirakawago-and-explore-traditional-japan/2586?acode=gifupref>

<https://www.viator.com/Takayama/d25943-ttd/p-183058P14?eap=brand-subbrand-82427&aid=vba82427en>

<https://www.viator.com/tours/Gifu-Prefecture/Shirakawa-go-Half-day-tour-UNESCO-World-Heritage-near-Takayama/d50165-183058P7>

<https://www.klook.com/en-US/activity/17723-shirakawago-half-day-tour-nagoya/>

Destilerías de sake locales



Excursiones y actividades en los alrededores.

<https://www.viator.com/Takayama/d25943-ttd/p-45022P1?eap=brand-subbrand-82427&aid=vba82427en>

<https://www.viator.com/Takayama/d25943-ttd/p-183058P16?eap=brand-subbrand-82427&aid=vba82427en>

<https://www.viator.com/Takayama/d25943-ttd/p-73612P2?eap=brand-subbrand-82427&aid=vba82427en>

<https://www.viator.com/Gifu-Prefecture/d50165-ttd/p-86493P1?eap=brand-subbrand-82427&aid=vba82427en>

Ji-Kabuki (Gifu Kabuki)



Descubriendo la tradición

<https://visitgifu.com/es/see-do/ji-kabuki/>

Excursiones y actividades en los alrededores

<https://www.govoyagin.com/activities/japan-gifu-ji-kabuki-local-kabuki-experience-nakatsugawa/12213?acode=gifupref>

<https://www.govoyagin.com/ja/activities/japan-gifu-kabuki-makeover-backstage-tour-optional-overnight/12207>

<https://www.viator.com/tours/Gifu-Prefecture/Visit-the-Local-Kabuki-Theater-Meijiza-and-Experience-Kumadori-Makeup/d50165-51978P521>

Pesca con cormoranes



Lugares para observar la pesca del cormorán:

Pesca de cormoranes en el río Nagara (ciudad de Gifu)

<https://visitgifu.com/es/see-do/cormorant-fishing-on-the-nagara-river/>

Pesca de cormoranes de Oze (Seki)

<https://visitgifu.com/es/see-do/oze-cormorant-fishing/>

Excursione de un día

<https://www.viator.com/tours/Gifu-Prefecture/Oze-Ukai-Japans-Oldest-Cormorant-Fishing-and-Purveyor-to-the-Imperial-Household/d50165-51978P528>

Las cuchillas Seki



Artículo en profundidad

<https://visitgifu.com/es/specials-of-gifu/seki-blades/>

Facilidades relacionadas

Museo de cubiertos Sanshu y cuchillas Seki

<https://visitgifu.com/es/see-do/cutler-sansyu-seki-hamono-museum/>

Museo de espadas tradicionales de Seki

<https://visitgifu.com/es/see-do/seki-traditional-swordsmith-museum/>

Actividades relacionadas

<https://www.govoyagin.com/activities/japan-gifu-make-your-own-samurai-knife-with-a-certified-swordsmith/3146?acode=gifupref>

<https://www.govoyagin.com/ja/activities/japan-gifu-make-your-own-hunting-or-kitchen-knife-at-a-top-knife-maker/10765?acode=gifupref>

<https://www.govoyagin.com/activities/japan-gifu-complete-samurai-sword-experience-in-seki-city/10832?acode=gifupref>

<https://www.govoyagin.com/ja/activities/japan-gifu-make-your-own-hunting-or-kitchen-knife-at-a-top-knife-maker/10765?acode=gifupref>

Papel tradicional de Mino



Descubriendo la tradición

<https://visitgifu.com/es/see-do/mino-washi/>

Descubriendo la zona

<https://visitgifu.com/es/see-do/udatsu-wall-historical-district/>

Excursiones y actividades en los alrededores.

<https://www.govoyagin.com/ja/activities/japan-gifu-discover-traditional-japanese-craft-washi-making-gifu/10836?acode=gifupref>

<https://www.govoyagin.com/ja/activities/japan-gifu-washi-letterpress-printing-udatsu-historical-district-gifu/10835?acode=gifupref>

<https://www.govoyagin.com/ja/activities/japan-gifu-washi-paper-making-with-an-artisan-in-mino-gifu-prefecture/10751?acode=gifupref>

Mitake Hanazushi: el sushi en forma de flor



Guía de actividades

<https://visitgifu.com/es/see-do/mitake-hana-zushi/>

Descubriendo la zona

<https://visitgifu.com/es/see-do/mitake-juku/>

Excursiones y actividades en los alrededores.

<https://www.viator.com/tours/Gifu-Prefecture/Experience-Hana-Zushi-Making-with-Local-Grandmas-in-Gifu/d50165-51978P522>

La antigua carretera Nakasendo



Artículo en profundidad

<https://visitgifu.com/es/specials-of-gifu/nakasendo/>

Descubriendo el Nakasendo

<https://visitgifu.com/es/see-do/ancient-nakasendo-highway/>

Los puntos de interés cercanos

<https://visitgifu.com/es/see-do/magome-juku-historic-post-town/>

<https://visitgifu.com/es/see-do/naegi-castle-ruins/>

Excursiones y actividades en los alrededores.

<https://www.govoyagin.com/ja/activities/japan-gifu-walk-and-cycle-on-the-old-nakasendo-road-magome-ena-gorge/4275?acode=gifupref>

<https://www.govoyagin.com/ja/activities/japan-gifu-nakasendo-walking-and-cycling-tour-of-magome-juku-and-kashimo/9504?acode=gifupref>

<https://www.klook.com/en-US/activity/15597-explore-magome-lunch-day-trip-nagoya/>

Takayama



Descubrir Takayama y sus lugares de interés

<https://visitgifu.com/es/see-do/takayama-historic-district/>

<https://visitgifu.com/es/see-do/hida-beef/>

<https://visitgifu.com/es/see-do/hida-takayama-miyagawa-morning-market/>

Excursiones y actividades en los alrededores.

<https://www.viator.com/Takayama/d25943-ttd/p-183058P10?eap=brand-subbrand-82427&aid=vba82427en>

<https://www.viator.com/Takayama/d25943-ttd/p-235914P7?eap=brand-subbrand-82427&aid=vba82427en>

<https://www.viator.com/Takayama/d25943-ttd/p-235914P6?eap=brand-subbrand-82427&aid=vba82427en>

<https://www.viator.com/Takayama/d25943-ttd/p-85886P321?eap=brand-subbrand-82427&aid=vba82427en>

Los bailes de Gujo



Descubriendo los bailes del Gujo

<https://visitgifu.com/es/see-do/gujo-dance/>

Lugares para visitar cercanos

<https://visitgifu.com/es/see-do/gujo-hachiman-castle/>

Taller cercano (tinte índigo Gujo)

<https://www.govoyagin.com/ja/activities/japan-gifu-aizome-traditional-indigo-dyeing-in-gujo-hachiman/10766>

Castillo de Gifu



Descubriendo el castillo de Gifu

<https://visitgifu.com/es/see-do/gifu-castle/>

Otras imperecederas tradiciones artesanales

Actividades y talleres

Tallas de Madera

<https://www.govoyagin.com/ja/activities/japan-gifu-sake-tasting-and-masu-cup-making-in-ogaki-gifu-prefecture/10793?acode=gifupref>

<https://www.govoyagin.com/ja/activities/japan-gifu-tour-craft-studios-make-wooden-vase/12185?acode=gifupref>

Cerámicas artesanales de Mino

<https://www.govoyagin.com/ja/activities/japan-gifu-mino-ware-pottery-making-in-tajimi-city-gifu-prefecture/10791?acode=gifupref>

<https://www.govoyagin.com/ja/activities/japan-gifu-pottery-painting-at-kobei-gama-in-tajimi-gifu-prefecture/10792?acode=gifupref>

<https://www.govoyagin.com/ja/activities/japan-gifu-mino-ware-pottery-painting-and-tea-in-tajimi-gifu-prefecture/10788?acode=gifupref>

<https://www.govoyagin.com/ja/activities/japan-gifu-japanese-tea-and-hikidashi-guro-ware-in-toki-gifu-prefecture/10789?acode=gifupref>

<https://www.govoyagin.com/ja/activities/japan-gifu-japanese-ceramics-factory-tour-and-sake-tasting-from-mino-ware/10764?acode=gifupref>