

SARUBOBO

COVID-19

Safety Tips

GIFU  Home

WHAT IS A SARUBOBO?

Sarubobo are traditional protection charms from the northern Hida region of Gifu that were believed to ward off evil spirits and stave off epidemic diseases. These uniquely adorable dolls are named for their resemblance to baby monkeys and have become one of the prefecture's most popular souvenirs.



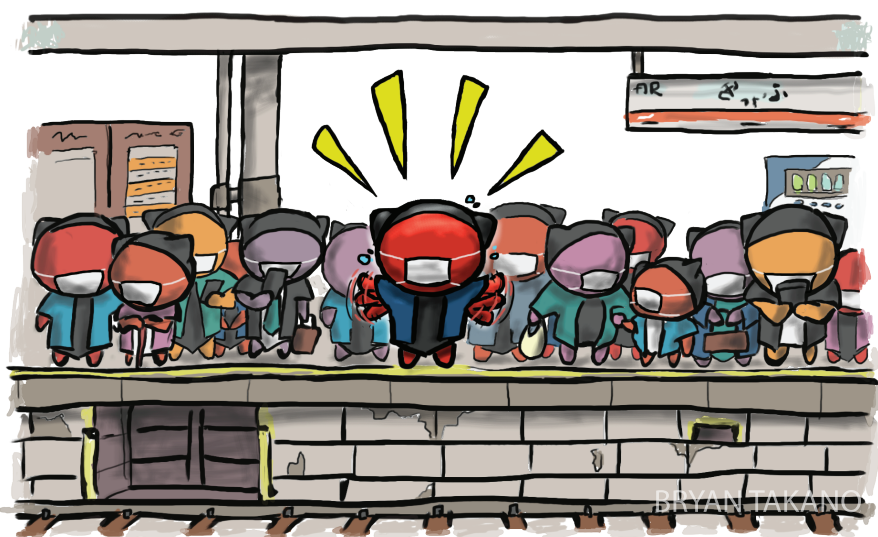
Following their natural instincts as protective entities, these sarubobo want to do their part in helping prevent the spread of COVID-19 and have researched some everyday practices that you can follow to protect yourself, and those around you, from infection. Let's all do our part to stop the spread of COVID-19!

AVOID THE THREE C's

TO PREVENT CLUSTER INFECTIONS

2 CROWDED PLACES

WITH MANY PEOPLE NEARBY



3 CLOSE-CONTACT SETTINGS

SUCH AS CLOSE RANGE CONVERSATIONS OR INTERACTIONS WITH OTHERS



1 CLOSED SPACES

WITH POOR VENTILATION

OTHER PREVENTION TIPS

- WASH YOUR HANDS OFTEN



- PRACTICE SOCIAL DISTANCING (AT LEAST 1-2 METERS)

- WEAR A MASK WHEN AROUND OTHERS (WHEN A MASK IS NOT AVAILABLE USE A BANDANA OR FACE CLOTH)



- REMEMBER PROPER COUGHING & SNEEZING ETIQUETTE (COVER YOUR NOSE AND MOUTH WITH A TISSUE OR THE INSIDE OF YOUR ELBOW, WASH HANDS AFTER)

- AVOID TOUCHING YOUR FACE -AND- OBJECTS HANDLED BY OTHERS



Stay Safe

From SARUBOBO 

THIS INFOGRAPHIC WAS MADE WITH INFORMATION PROVIDED BY:
WORLD HEALTH ORGANIZATION
MINISTRY OF HEALTH, LABOUR AND WELFARE

MADE IN COOPERATION WITH GIFU PREFECTURE
ILLUSTRATION COPYRIGHT © BRYAN TAKANO